

The diagram above is just for reference. Please take the appearance of the actual product as the standard.

WATER PURIFIER

Instruction Manual

Model: JL1844S-RO

Before installing and operating your water purifier, please read the instruction manual carefully and keep it for future reference.

DIRECTORY

1. Precaution	1
2. Your Direct Drinking Water Purifier	3
3. Product Installation	5
4. Operation Instructions	8
5. Cleaning	9
6. Maintenance	10
7. Troubleshooting	11

1. Precaution

1-1 Safety Issues

Please note the following brief icons and rules for safe use of this product



Troubleshooting

When the machine fails, please disconnect the power and water source immediately



Maintenance

Never remove the parts on the machine to avoid leakage or damage



Avoid contact with children

Never have the machine operated by a child



Temperature

Please use the product in a dry place with the temperature of 4-43°C



Electricity prevention

To avoid leakage of electricity.



Accessories and filters

To maintain the normal operation of the machine, be sure to use accessories and filters supplied by original company



Emergency call

For any help, please call the local sale service center or the national service hotline



Correct repair service

This machine can only be repaired by qualified personnel designated by this company



Avoid direct sunshine

Do not install the machine in a place exposed to direct sunshine



Anti-freeze

Never store or expose the product duct in an environment less than 0°C

1. This appliance can be used by children aged from 8 years and above if they have been given supervision or instruction concerning use of the appliance in a safe way and if they understand the hazards involved. Cleaning and user maintenance shall not be made by children unless they are older than 8 and supervised. Keep the appliance and its cord out of reach of children aged less than 8 years.
2. Appliances can be used by persons with reduced physical, sensory or mental capabilities or lack of experience and knowledge if they have been given supervision or instruction concerning use of the appliance in a safe way and understand the hazards involved.
3. Children shall not play with the appliance.
4. If the supply cord is damaged, it must be replaced by the manufacturer, its service agent or similarly qualified persons in order to avoid a hazard.
5. Do not store explosive substances such as aerosol cans with a flammable propellant in this appliance.
6. This appliance is intended to be used by expert or trained users in shops, in light industry and on farms, or for commercial use by lay persons.
7. The appliance is suitable for indoor use only.
8. **WARNING:** Keep ventilation openings, in the appliance enclosure or in the built-in structure, clear of obstruction.
9. **WARNING:** Do not use mechanical devices or other means to accelerate the defrosting process, other than those recommended by the manufacturer.
10. The appliance must not be immersed.
11. **WARNING:** To avoid a hazard due to instability of the appliance, it must be fixed in accordance with the instructions.
12. This machine is applicable to the water environment with TDS value less than 250 in case of the high water hardness lead to incrustation even breakdown of the hot tank.
13. The appliance must not be cleaned by a water jet.
14. This product is not recommended to use in areas above 1,500m altitude.
15. The new hose-sets supplied with the appliance are to be used and that old hose-sets should not be reused.

1-2 R600a SAFETY INSTRUCTION

WARNING: Risk of fire / flammable materials!

WARNING: During transportation, installation, cleaning & use of the appliance, care should be taken to avoid damage to the refrigeration circuit which could result in a refrigerant leak.

WARNING: Do not use mechanical devices or other means to accelerate the defrosting process, other than those recommended by the manufacturer.

WARNING: Do not use electrical appliances inside the reservoir, unless their use has been recommended by the manufacturer.

This refrigerant is flammable - please follow these precautions to ensure safe operation of the appliance:

- Keep ventilation openings in the appliance clear of obstruction.
- If damage to parts that contain refrigerant damage occurs, then avoid any open flames or potential sources of ignition and ventilate the room where the appliance is located for thirty minutes.
- Servicing of this appliance should only be carried out by trained and qualified personnel.
- Old units must be disposed of safely in accordance with local laws. Contact your municipal authority about disposal of WEEE in your locality.
- Do not use an extension cord as it may overheat, increasing the risk of fire.
- Never turn the dispenser upside down. If the dispenser has been resting on its side for a long period of time, place the unit in the upright position for approximately 12 hours before using.
- Keep your water dispenser in a dry place away from direct sunlight.

WARNING-GENERAL

To avoid hazard due to instability of the appliance it must be fixed according to the instructions.

When positioning the appliance, ensure the supply cord is not trapped or damaged.

Do not locate portable socket-outlets or portable power supplies at the rear of the appliance.

Hot water can scald.



R600a

DANGER: Flammable Refrigerant Used.

To be repaired only by trained service personnel.

Do not puncture refrigerant tubing.

CAUTION: Risk of Fire or Explosion.

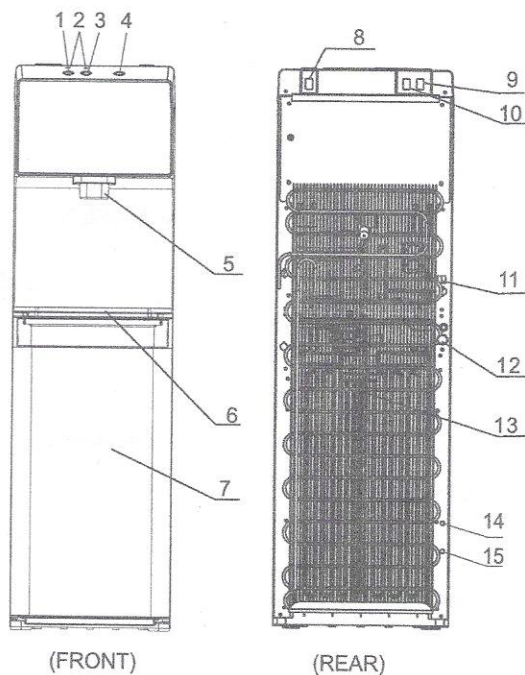
Dispose of properly in accordance with National or local regulations.

1-3 packing list

Packing box	Direct drinking water purifier (1set) 1/4" PE pipe
Materials bag	User's Manual (1copy)
Materials bag	Connector(1 pc) Bracket (1 pc) Filter flushing tip (1 pc)
Filter	PP sediment filter(1 pc) Front active filter(1pc) Post active carbon filter(1pc) RO reverse osmosis filter(1 pc)

2. Your Direct Drinking Water Purifier

2-1. Part Name of Water Purifier



No.	PART NAME
1	Child safety lock push button
2	Filter indicator light
3	Hot water button
4	Cold water button
5	Spout
6	Drip tray
7	Door
8	Filter reset switch
9	Heating switch
10	Cooling switch
11	Power cord
12	Drain outlet
13	Condenser
14	Waste water outlet
15	Water inlet

NOTE:

Please use the product in a place with temperature of 4-43°C and relative humidity less than 90%. TO enhance produce performance, product parts may be changed without notice.

2-2. Model and Major Parameters

Model	JL1844S-RO
Rated voltage	220-240V~
Rated frequency	50/60Hz
Rated power	500W
Heating power	420W
Cooling current	1.0A
Rated pure water flow	0.2L/min(0.25MPa)
Hot water capacity	4L($\geq 85^{\circ}\text{C}$)
Cold water capacity	2.5L($\leq 10^{\circ}\text{C}$)
Applicable environment	4-43°C humidity $\leq 90\%$
Applicable water pressure	0.1-0.4MPa
Applicable water	Tap water
Stage 1	PP fibre filter-F1
Stage 2	Front active filter-F1
Stage 3	RO reverse osmosis filter-F1
Stage 4	Post active carbon filter-F1
Product size	310(W)x360(D)x1040(H)mm
Packing size	358(W)x396(D)x1120(H)mm

2-3. Product Features

1. Fresh pure water: four stage high-precision filtration to ensure effluent water quality.
2. Compressor for cooling: adopt stable, high-efficiency and low noise compressor.
3. Quadruple anti-dry burning protection: filtered water was provided to hot tank in priority, water level control system identifies the water level automatically, double protection of thermostat, quadruple anti-dry burning protection system.
4. Quick connect fitting technology: adopt Korean quick connect fitting technology which has outstanding sealing and no water leakage.

2-4. Product Functions

1. High-precision filtration, pure water quality

Through high-precision four stage filtration system, it filters granules, iron rust, colloids, bacteria, residential chlorine and impurities in water.

2. Satisfy demand of drinking water and kitchen water

It can make water in 24 hours continuously according to needs. Ample water satisfies demand of drinking water and kitchen water.

3. Keep fresh pure water

It is connected to tap water directly, can make water continuously and keep dissolved oxygen in water, ensuring fresh pure water for drinking and kitchen use.

4. Humanized safety protection

A series of humanized designs guarantee safety of water consumption completely, like lighting device, childproof faucet and quadruple anti-dry burning protection.

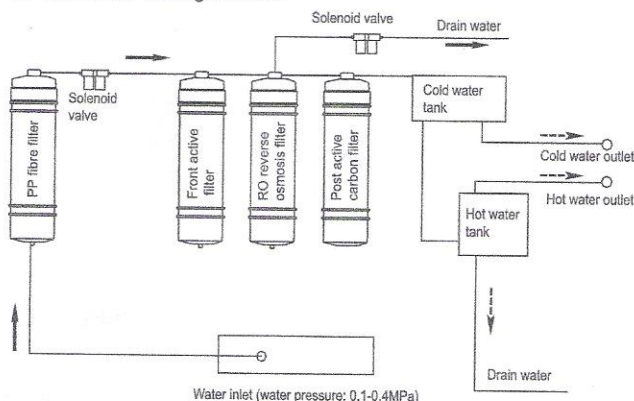
5. Install the hydraulic pressure

Applicable water pressure: 0.1-0.4MPa.

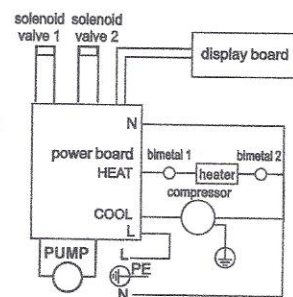
Guidelines for ensuring protection of the water cooler by means of a ground-fault circuit interrupter.

2-5. Working Principle

1. Flowchart of water generation



2. Circuit diagram



3. Filter Function Introduction

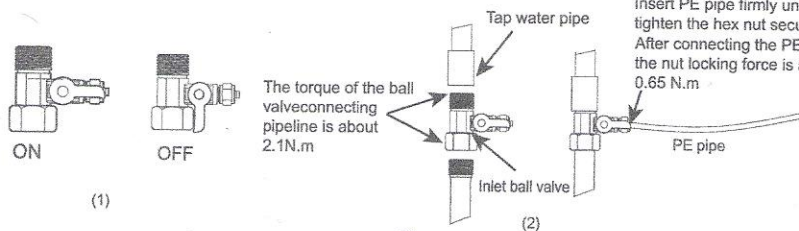
Stage	Filter	Function
Stage 1	PP fibre filter-F1	Carry out coarse filtration of original water, and filter out mud, sand, impurity, iron rust and suspension, etc.
Stage 2	Front active filter-F1	Absorb unusual colors and odors, Remove residual chlorine and organic substances in water.
Stage 3	RO reverse osmosis filter-F1	Nonionic Absorbing : Organics, alcohol, ketone, aldehyde, phenol Particulate retention: Solid Suspended Solids, Colloids.
Stage 4	Post active carbon filter-F1	Further absorb micro-molecules and organic substances in water. Make water taste better.

3. Product Installation

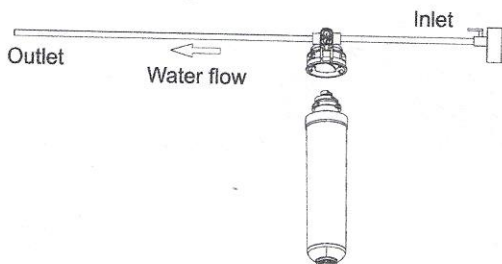
WARNING: Please cut off water source before replacing filters. Never plug filters in water running state.

3.1 Guidance on Unpacking and Installation

1. Open the top of the packing case, take out the top foam and its accessories.
2. Put the accessories aside.
3. Unpack the product.
4. Take out the inlet ball valve.
5. Attach inlet ball valve to tap water pipe.
6. Attach the PE pipe to the inlet ball valve (Insert firmly until it hits).

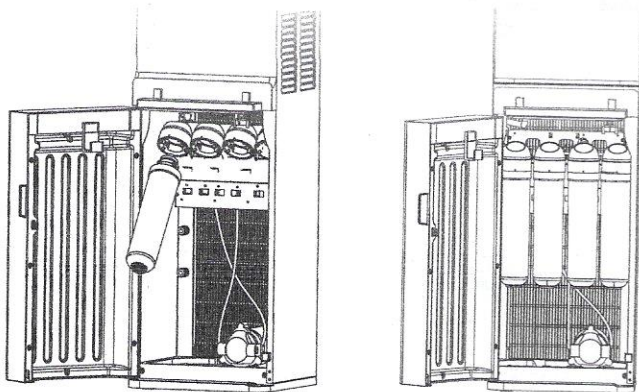


7. Use the after sale accessory -- filter flushing tip, the arrow direction is the water flow direction, insert the PE pipe in the quick joint.

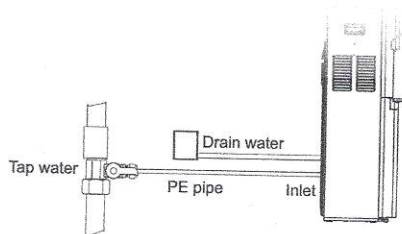


8. Insert the Front active filter-F1 into the filter flushing tip, tighten it by turning anticlockwise, and open the water tap to flush the filter till it doesn't discharge black water, for about 10min. Take the same step to flush the Post active carbon filter-F1.

9. Install the clean filter in the product, hold the filter with the left hand and enclosure of filter with the right hand, and insert it upwards in the filter, tighten it by turning anticlockwise, the installation order is: PP fibre filter-F1 → Front active filter-F1 → RO reverse osmosis filter-F1 → Post active carbon filter-F1.



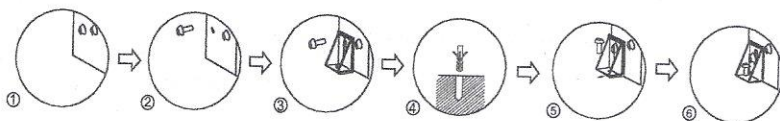
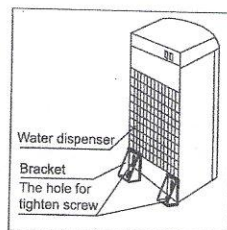
10. Take out the pin of the quick joint at the rear of the products side plate's, and then take out the white plug.



11. Insert the water inlet PE pipe in the quick joint, and tighten the pin.
12. After installing, supply power, and use it normally.
13. The water cooler plug cord into a ground fault interrupter receptacle.
14. When installing filter and replace filter please turn off the water and power supply before installation and replacement.

3-2 Machine Installation

- 1-2. Loosen the screw of the left or right bottom angle just as the picture shown.
3. Use the screw to fix the bracket on the left or right bottom angle of the water dispenser.
4. Make a hole on the floor's or the desk's surface where the water dispenser will be installed.
5. Fix the bracket on the floor by screw tightly.
6. Tighten the screw.

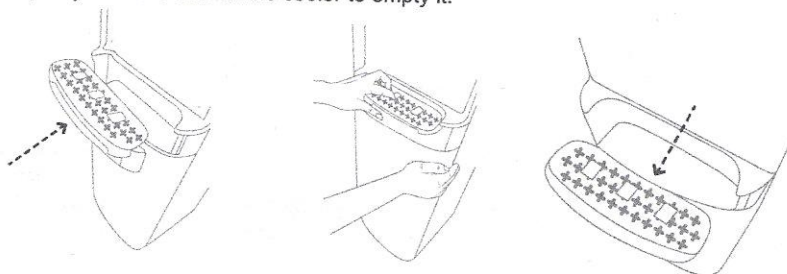


WARNING! To avoid a hazard due to instability of the appliance, it must be fixed in accordance with the instructions.

Installing and Removing the Drip Tray

No external drain is needed, the overflow will collect here. The red float will rise to indicate when the drip tray needs to be emptied.

1. To install the drip tray, simply slide it into the area at the top of the door until it snaps into place.
2. To remove the drip tray, place your fingers in the grid of the drip tray with one hand and hold the door of the cooler shut with the other.
3. Gently pull the drip tray toward you to release it. Once it has been released you can remove the drip tray from the door of the cooler to empty it.



4. Operation Instructions

4-1 Dispensing Water

Cold water

Once you have turned the cooling switch into the on (I) position it will take initially 1 hour for the water to cool. During this time the cooling indicator light around the cold water button will blink. During this time the compressor could run continuously. This is normal. The light will be turned off when the cooling process is complete.

1. Position a bottle, glass, pitcher or cooking pot below the water spout.
2. Press the cold water button to begin the flow of water. You must continue to press the cold water button in order for the water to continue to flow. While water is dispensing, the button will light up blue.
3. Once the desired fill level is achieved, release the cold water button to stop the flow of water.

Hot water

Once you have turned the heating switch into the on (I) position it will take initially 15 – 20 minutes for the water to heat up. During this time the heating indicator light above the hot water icon will be steady. The light will be turned off when the heating process is complete.

1. Position a bottle, glass, pitcher or cooking pot below the water spout .
2. Press the child safety lock push button and press the hot water button to begin the flow of water. You must continue to press the hot water button in order for the water to continue to flow. While water is dispensing, the button will light up red.
3. Once the desired fill level is achieved release the hot water push button to stop the flow of water.

4-2 The display panel is shown as below:

Heating Indicator Light

This light will indicate when the water is heating. The light will blink while the water is heating and will turn off when it has reached the correct temperature of approximately 85°C.

Cooling Indicator Light

This light will indicate when the water is cooling. The light will blink while the water is cooling and will turn off when it has reached the correct temperature of 4°C.

Filter Indicator Light

This light will be red when the filter needs to be replaced. This light will begin to blink red as a warning that the filter will need to be changed soon. When the life of the filter is expired this indicator light will remain steady on and the unit will beep to alert you that it needs to be changed right away.

5.Cleaning

Rinsing, Cleaning, and Draining

To prolong the lifetime of the machine, it is recommended that the unit be cleaned and sanitized manually about every six months.

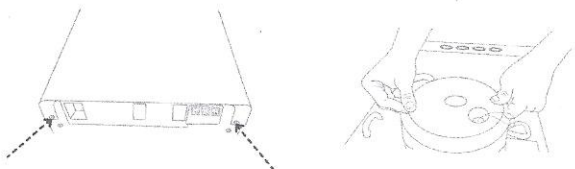
To clean the outside of the unit

Use a disinfectant of your choice to wipe down the outside of the machine. Disinfectant does not come with this unit. It can be purchased separately from a local store.

To rinse the inside of the unit

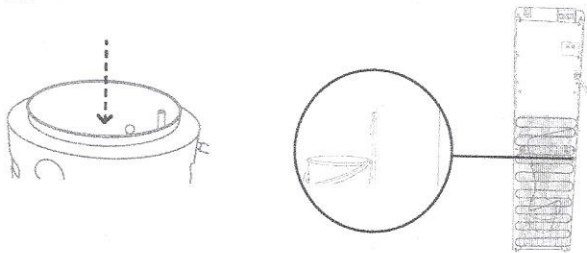
The machine has been disinfected prior to departing from the factory. However, it is recommended to rinse and drain the unit prior to installation.

1. Before cleaning, make sure that the cooling switch and heating switch are in the off (O) position and unplug the machine.
2. Remove the two screws located on the back (at the top, in line with the switches) of the cooler. Remove the top cover by lifting at an angle and pull off. Remove the white cold water tank cover and the separator.



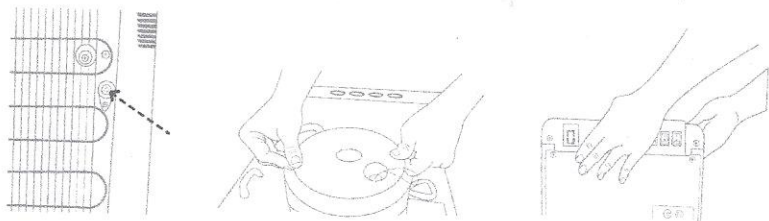
3. Pour 0.6 gallons of clean water into the cold tank. (The cold water tank is the open cylinder that the white cover was removed from).

4. Place a large bucket beneath the drain outlet located on the back of the unit. Remove the drain cover and allow the water to drain from the unit. Water will start flowing as soon as the drain cover is removed.



Caution: The dispenser will heat water to a temperature of approximately 90°C. It can cause severe burns if not handled carefully. Please use caution while operating and cleaning. Please allow ample time for any hot water inside the machine to cool down before draining it.

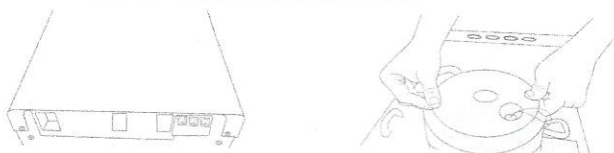
5. Once water is completely drained, reposition the drain cover, cold tank cover and the top cover. Ensure that the pipes and wires are connected properly and you may use the dispenser as normal.



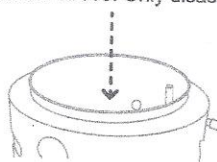
Cleaning

To remove mineral deposits that may have built up inside the cold tank, mix 4 L of water with 200 g of citric acid crystals (not included) or cleaning solution of your choice.

1. Unscrew the top cover and lift off the cold tank lid.



2. Put the mixture into the machine's cold tank and make sure the water can flow out of the spout.
3. Plug in the power cord and turn on (I) the heating switch. Allow the water to heat for 15 minutes.
4. Turn off (O) the heating switch and allow the liquid mixture to cool down for 20 minutes.
5. Drain the liquid from the drain outlet, then flush with water two or three times by following the rinsing instructions above. Only disassemble parts mentioned to avoid damaging the machine.



6. Maintenance

1. Keep this machine in a dry and cool place and avoid direct sunshine. Rearward of the machine shall be at least 20 cm away from the wall. Never put the machine on paper or foam, which may store water and then cause creepage. Never put anything flammable beside this machine. Do not use the machine outdoors or in a place that can be splashed by water.
2. For the water purifier, the installation and replacement of filters must be carried out by qualified personnel.
3. In case the machine is not in use for a long time, turn off the heating switch or the refrigerating switch to save power.
4. In case the machine is not needed for a long time, please take off the plug, turn off the copper chrome-plated ball valve and drain off the remaining water through the outlet. For another use, discharge water for 3-5min. In the event that the machine is blocked by ice due to the environment below ice point, keep the refrigerating switch closed for 4 hours and then turn it on to continue the operation.
5. In case the water supply is cut off, please close the feed water ball valve and cut off the power, after water re-supply, please open the other faucets to discharge sediment and then turn on the feed water ball valve.
6. The machine must use an earthed three-pin socket and a reliable creepage protection switch.
7. Never use organic solvents such as gasoline to clean the machine: strictly prohibit washing the machine with water or splashing water to the machine.
8. Never turn on (off) the machine by inserting the plug into (pulling the plug out from) the socket. Never increase the length of the supply cord to avoid fire.
9. If the supply cord is damaged, it must be replaced by the manufacturer or qualified person so as to avoid a hazard.
10. The water source for the water purifier is civil tap water.
11. Never dismantle spare parts of the machine to avoid water leakage or damage.
12. Never turn the machine upside down or lean it more than 45° when moving it so as to avoid any damage to it or any accident.
13. Limited warranty: electrical components and water system are warranted for 12 months from date of purchasing.

7. Troubleshooting

In case of failure, please carry out inspection according to the requirements below. If unresolved, please contact the local service agency.

Failure	Cause	Solution
Small water flow	Low water pressure	Check the booster pump or water inlet
	Filter not replaced in time, beyond the use time	Please contact the local service agency to replace the filter
Unsuitable water temperature	Power supply not put through	Please switch on power supply
	Over consumption of water in a short time	Just wait a moment, and water is available again
	Corresponding functions not started	Press a corresponding function key to start the function
Water leakage	Pipe not connected properly	Inspect the connector to connect the pipe properly
	Water pipe and PE pipe bursting	Replace the water pipe and PE pipe
All lights are flashing	There should be leakage	Check the PCB on the base plate. Repair the machine and dry the PCB, and then power on again.
Electric leakage	Machine in poor contact with ground	Use a three-pin socket with earth wire, making the machine grounded properly
Noisy operation	Not installed steadily	Place the machine on a steady & solid surface
Machine fails to run	Power supply not put through	Switch on power supply

It is a normal state that the following circumstances occur when the water purifier is used.

1. During the heating, the heating tube may generate slight noises. This is a normal state.
2. When the heating tank is being heated without water, the anti dry-burning device will disconnect automatically and can not reset by its own. The reset must be completed by a professional technician. The design is in accordance with the national safety requirements.
3. When an ambient temperature is higher, the cooling capacity may be slower, which is a normal state.

The packaging material used is recyclable; we recommend that you separate plastic, paper and cardboard and give them to recycling companies. To help preserve the environment, the refrigerant used in this product is R600a, which does not affect the ozone layer and has little impact on the greenhouse effect. According to WEEE (Waste of Electrical and Electronic Equipment) guidelines, waste from electrical and electronic devices should be collected separately. If you need to dispose of this appliance in the future, do NOT throw it away with the rest of your domestic garbage. Instead, please take the appliance to the nearest WEEE collection point, where available.



The product is subject to change without notice.
Please keep this manual properly.