

The diagram above is just for reference. Please take the appearance of the actual product as the standard.

WATER PURIFIER

Instruction Manual

Model: MU1861A

Before installing and operating your water purifier, please read the instruction manual carefully and keep it for future reference.

Contents

1. Safety Precautions	1
2. Product Introduction	2
3.Cleaning and maintenance	4
4. Filter introduction	6
5. Technical Parameters	7

The packaging material used is recyclable; we recommend that you separate plastic, paper and cardboard and give them to recycling companies. Guidelines, waste from electrical and electronic devices should be collected separately. If you need to dispose of this appliance in the future, do NOT throw it away with the rest of your domestic garbage.



1. Safety Precautions

Warning

In order to ensure safety and avoid injury and property loss to you and others, please be sure to follow the following safety precautions. Misuse with ignoring safety precautions may lead to accidents.

Contents Represents [Prohibited].



No sunlight



No inflammables



No wet area



No touch with wet hands

- Avoid storage in places with strong sunlight, which may cause aging of product parts. Avoid exposure and storage in under 0°C environment.
 - Strong magnetic devices nearby may cause fire, product damage or circuit failure. Wet and dusty areas may cause circuit damage.
 - Please do not place heavy objects on the product.
 - Please do not allow children operate, touch, approach or climb the product. Children and the mentally disabled shall use the product in cooperation with guardians.
 - When cutting the power off, do not pull the power cord directly to prevent it from breaking.
 - Please keep the plug clean. Do not plug or unplug with wet hands. Please do not connect the boosting transformer to the power plug.
 - Do not bring inflammable, volatile substances near the product.
- The product cannot contact or be close to heat source and open fire.

Contents Represents [Mandatory]



Grounding Required



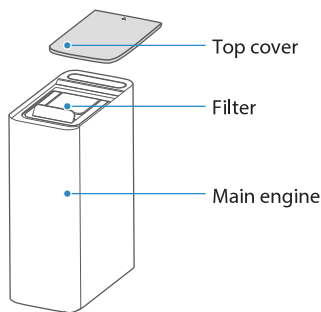
Need Professional Help

- If the power cord is damaged, in order to avoid danger, it must be replaced by professionals from manufacturer, its maintenance department or other similar departments. Do not squeeze, fold, knot or damage the power cord.
- It must be installed or moved by professional personnel. Disassembling at your own discretion may easily damage the parts of the products and cause electric shock. Movement at your own discretion is easy to operate improperly and cause machine damage.
- When the water does not meet the municipal water standards (including high sediment content and excessive residual chlorine, etc.), a pretreatment device shall be installed before the product.
- The optimum working pressure of this product is 0.1-0.4 MPa. If the water pressure is lower or higher than this, please install pressure boosting device or pressure reducing device accordingly.
- In case of product failure, quickly cut off the power supply/water supply and contact the local distribution service outlets or the national service hotline 400-830-8289.
- When the ambient temperature is low, the flow will reduce, which is the inherent feature of the filter element.
- Clean and replace the filter element regularly.
- Please be sure to use parts provided by our company.
- It is normal for the product to have slight vibration and noise when processing water.
- This product is only for indoor installation. There should be a reliable floor drain within 1.5m around the installation to avoid possible water leakage and losses caused by poor drainage.
- If you do not use this product for a long time, please cut off the power and close the three-way ball valve. When using it again, you shall release the water for 3-5 minutes before normal use.

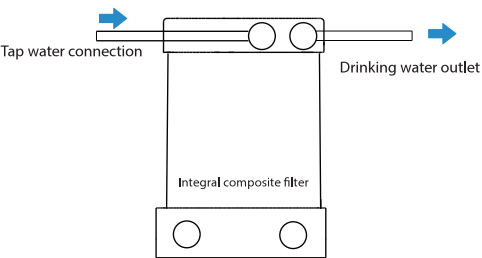
- ⚠ Contents you shall [Notice] which may cause minor injury or property damage.**
- In case of water shutdown or pipeline maintenance, please cut off the power and close the three-way ball valve. When restoring water supply, please turn on other water faucet to remove sediment before opening the three-way ball valve, otherwise, a large amount of sediment may cause the blocking of the filter element.
 - The instructions for appliances connected to the water mains by detachable hose-sets shall state that the new hose-sets supplied with the appliance are to be used and that old hose-sets should not be reused.

2. Product Introduction


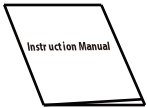



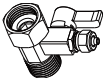
2-1 Name of parts



2-2 Water treatment process diagram



2-3 List of parts

Packing box	Water Purifier (1set)	Instruction Manual(1 copy)	1/4"PE pipe (3m)
			
	Faucet(1PC)	Snap ring(8PC)	Inlet ball valve(1PC)
			

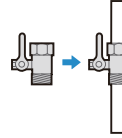
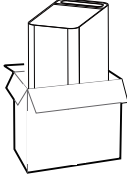
2-4 How to use

⚠ Notes:

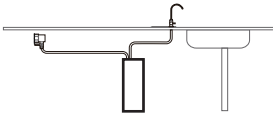
The installation shall be conducted by professional in local sell on commission and service site.

Installation

1. Take out the product from packaging box and put it under water groove in the kitchen.
2. Take the three-way ball valve out and install it on tap pipe.



3. Connect the pipeline and install the faucet according to the diagrammatic drawing of water installation

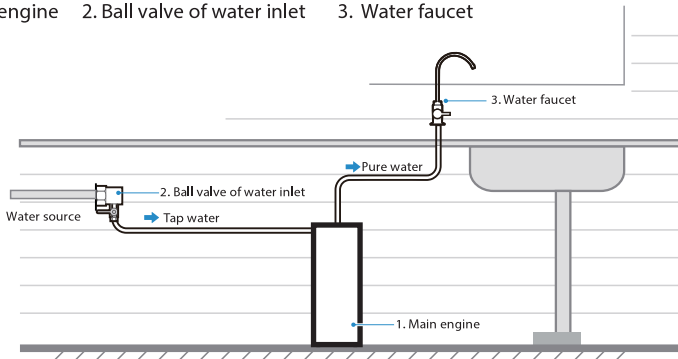


Diagrammatic drawing of water installation

⚠ Notes:

There are some differences between drawings in manual and real object. The practice is subjected to real object, Main materials and equipment to be installed. If you need to use faucet adapter, please check the manual of Water purifier faucet adapter.

1. Main engine 2. Ball valve of water inlet 3. Water faucet



Materials needed in installation:



PE Pipe



Wrench



Towel



Tissue



Cup



Tube Cutter



Price List



Electric Drill



Screw driver



Monkey Wrench

First use instruction

Cautions

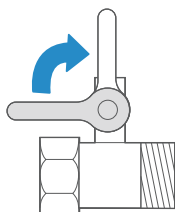
Installation shall be carried out by professionals from local sell on commission and service site.

The installation master shall install, flush and debug the whole machine according to the maintenance procedures.



Starting up

1. Open the three-way ball valve.



2. It is a normal phenomenon that a spot of black water arise at first when opening water faucet. The suggestion is flushing for 10 mins until the water is clear and non-tainted.



3.Cleaning and maintenance

3-1 Trouble shooting

Notes:

The following is the judgment and inspection of common abnormalities. If simple treatment cannot be eliminated, please send it to the maintenance office for consultation. Please do not disassemble and repair yourself to avoid danger or damage to the water purifier.

- There is any problem in using, please solve as the following methods. For the fault that can not be solved, please contact the local sell service center.

Issues	Reason	Trouble shooting
Water yield decreases abnormally	<ul style="list-style-type: none"> ● The filter is blocked. ● The filter is not be exchanged in time, then out of services ● Not opening the ball valve completely 	<ul style="list-style-type: none"> ● The filter need washing or exchanging ● The filter need exchanging ● Check the inlet ball valve is opened or not
The quality of water is poor	<ul style="list-style-type: none"> ● The filter element failure ● Not using in a long time (More than 3 days) ● The quality of water and source is poor 	<ul style="list-style-type: none"> ● please contact with the local sell service center and exchange in time ● Make the water run first then make power on, and use water to wash 3-5minutes ● Identify water source as municipal tap water
The maching is leaking	<ul style="list-style-type: none"> ● One compont fails 	<ul style="list-style-type: none"> ● Please cut off the water source and call the national service hotline to report the trouble.
Not discharging water after exchanging filter	<ul style="list-style-type: none"> ● Air blocking 	<ul style="list-style-type: none"> ● Please cut off the water when exchanging the filter
Making water running after shutdown, but water faucet does not work	<ul style="list-style-type: none"> ● Air blocking 	<ul style="list-style-type: none"> ● Make the water run first and use water to flush 3-5 minutes. If it did not work, please contact with the local sell service center

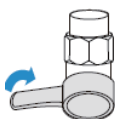
3-2 Maintenance steps

Notes:

To ensure your water purifier operating in the best operational condition and the security of drink water, after-sales service site will make a reservation and remind you (or you can contact with local after-sales service site) at fixed period to have a maintenance for equipment and change of filter . To ensure the service quality, you can supervise our maintenance service ("maintenance" means check, maintain, cleaning and change).

1. Check whether the functions of machine are normal or the water valve is closed.

2. Check whether overall appearance of machine is out of shape.



Close ball valve of water inlet



3. Check the connection of product's key parts, and push the PE pipes at the joint strongly to ensure PE pipes are inserted in place.

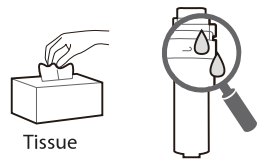
4. Scrub inner parts and shell of product until there is no dust or foreign matter.



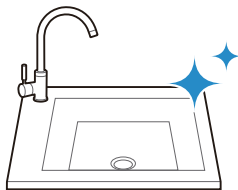
5. Change the filter. If filter needs to be changed, ask for users' suggestions firstly.



6. Connect to water source to make product outflow water normally. Check whether there are water leak in each connections with dry tissue.



7. After finishing work, help user clean and sweep home to ensure the sanitary is in good condition.



4. Filter introduction

4-1 Filter introduction

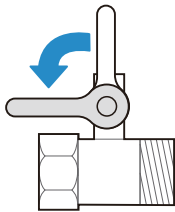
Filter name	Filter form	Function	Quantity	Suggested lifespan
Integrated multiple filter	PP layer	Effectively filter mud, sand, rust, suspended solid and other large-grained substance .	1	12-24 months
	carbon fiber layer	Effectively reduce organics (trichloromethane and carbon tetrachloride), residual chlorine, improve odour and taste.		
	UF layer	Intercept the bacteria (total escherichia coli) and colloid in water		

Special Prompt:

- The lifespan of filter is not quality guarantee time, but the ideal lifespan of filter with the raw water in accordance with the national standard of domestic drinking water and based on the normal water using of a common family.
- The maintenance period of filter is expected time , But the real lifespan is depend on area, the quality of water, the quantity of water using and season(it is subjected to the suggestions of local sell on commission and service site.). Only change filter timely, you can drink clear water.

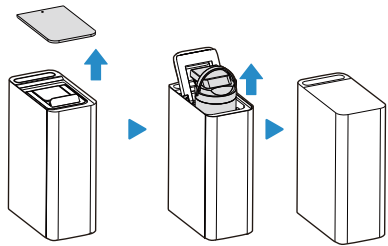
4-2 Filter change

1. First close three-way ball valve.



Close water inlet ball valet

2. Open top cover and take out the filter, then change it and press it tightly, finally put top cover back.



5. Technical Parameters

5-1 Basic parameter

Model		MU1861A	
Rated quantity of pure water	3600L	Suitable water resource for using	Municipal water
Pure water flow	1L/min	Exterior colors	White panel
Inletwater pressure	0.1-0.4MPa		

