

Top Loading Easy Maintenance Series



YL1932S

NEWEST DESIGN
SIMPLE & TRENDY



stainless steel cold tank



child safety lock

| | |
|---------------------------------------|------------------|
| Compressor Coil material | Aluminum (A) |
| Heated water temperature (°C) | ≥85 °C |
| Heated water capacity min (L / hr) | 4L / H |
| Chilled water temperature (°C) | ≤10°C |
| Chilled water capacity min (L / hr) | 2 . OL / H |
| Hot Tank dimension | 0 . 77L |
| Cold Tank dimension | 3L |
| heating watts (w) | 420W |
| Cooling watts (w) | 120w |
| Product Dimensions (mm) | 310 * 350 * 1000 |



+15%
Loading capacity



One-piece Three-bend Forming Body Design

Unique one-piece body , sturdy and beautiful , easy to transport and package

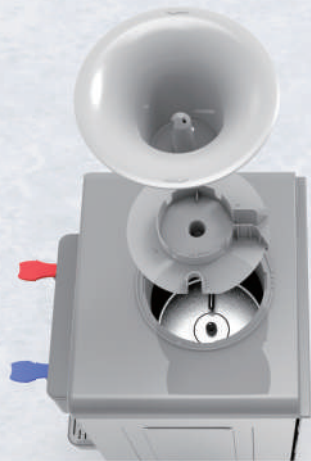
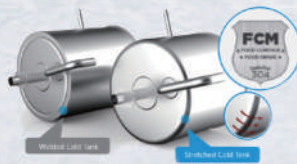


Easy Maintenance & Installation

No back cover design for easy maintaining

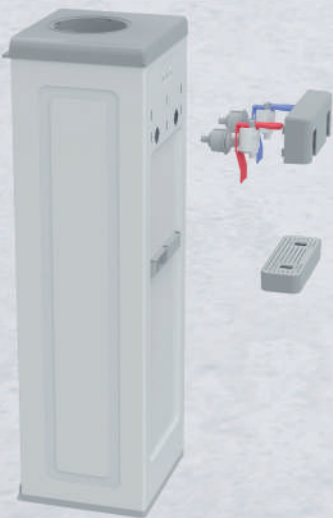


Easy cleaning and maintenance by removing the bottle supporter and separator (Stretched Stainless Cold Tank can be easier to clean without cracks)



Removable Design

Faucet is packed separately , and the volume of cabinets is greatly increased .



Drainpipe

Hidden drain pipe that can be drained from the front without having to move the machine multiple times to drain from the back (remove the drip tray to drain).